

Format for mandatory Disclosure

10.1 AICTE File no.

1-456093684

Date & Period of last Approval

23/08/2010

10.2 Name of the Institution

Shiv Kumar Singh Institute Of Technology & Science

Address of the Institution

Gram Dehri(Rangwasa) In front of IIM Pithampur Road

City & Pin Code

Indore

State/ UT

Madhya Pradesh

Longitude & Latitude

Latitude- 75 Degree 47 minute 49.95 Degree E. / Longitude- 22 Degree 37 minute 28.01Degree N

Phone number with STD code

0731-4253000-01-02-03-09

FAX number with STD code

0731-4253002

Office hours at the Institution

8:00AM To 4:00PM

Academic hours at the Institution

8:00AM TO 2:30PM

Email

Sksits.principal@gmail.com

Website

www.sksits.com

Nearest Railway Station (Dist in Km)

Indore Railway Station..... 20 km

Nearest Airport (dist in Km)

Ahilya Bai Holkar Airport, Indore.... 25 km

10.3 Type of Institution

Private

10.4 Name of the organization running the

Star Public School

Type of the Organization

Trust & Society

Address of the Organization

88, 111 Bank Colony, Annapurna Road Indore

Registered with

REGISTRAR LAND REVENUE INDORE

Registration date

30/5/2007

Website of the organization

www.sksits.com

10.5 Name of the affiliation University/ Board

- a) Rajiv Gandhi Prodyogiki Vishvavidhyalaya
- b) Devi Ahilya Vishva Vidhyalaya, RNT marg, Indore

Address

- a) Airport Bypass Road, Gandhi Nagar, Bhopal. (RGPV)
- b) RNT marg, Indore

Website

a) rgpvsupport@crispindia.com

b) www.dauniv.ac.in

Latest affiliation period

2011-12

10.6 Name of Principal/ Director

Dr. G D Gidwani

Exact Designation

Principal

Phone number with STD code

98270-43124

Fax number with STD code

0731-4253002

E-mail

Sksits.principal@gmail.com

Highest Degree

PhD

Field of specialization

Electrical Engineering

10.7 Governing Board Members

1	Mrs. Chanda Sisodia	Chairperson
2	Mr. Sharad Singh Sisodia	Secretary
3	Mrs. Suchitra Solanki	Treasurer
4	Mrs. Shalini Chandrawat	Joint Secretary

5	Mrs. Sheetal Gehlod	Member
6	Mrs. Reena Gautam	Member
7	Mrs. Premlata Devi	Member

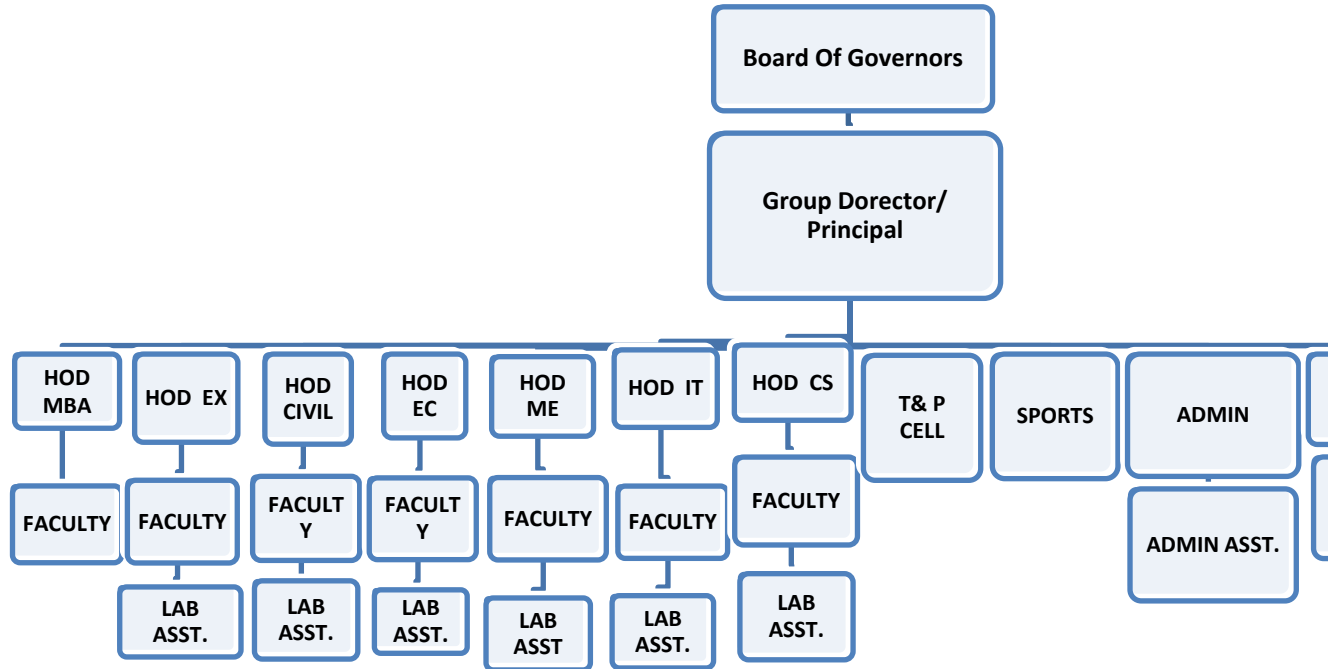
Frequency of meetings & date of last meeting: Quarterly, 11Jan 2011.

10.8 Academic Advisory Body

1	Mrs. Chanda Sisodia	Chairman
2	Mr. Sharad Singh Sisodia	Member
3	Mr. Manish Singh	Member
4	Mr. Mahavir Singh	Member
5	Mr. K.K.Sharma	Member
6	Mr. Y.S. Panwar	Member
7	Mrs. Shalini Chandrawat	Member
8	Mr. Krishna Gopal Singh	Member
9	Mr. Hitendra Singh	Member
10	Dr. G.D.Gidwani	Member Secretary

Frequency of meetings & date of last meeting:- Quarterly, 11Jan 2011

10.9 Organizational chart :-



Student feedback mechanism on Institutional Governance/ faculty performance

10.1

- (a) Suggestion Boxes in Position
- (b) Feedback meeting organized Quarterly
- (c) Through Elected class representatives.

10.12 Name of the Department:- BE, MBA

Course:- Civil Engineering,
Mechanical Engineering,
Computer Science Engineering
Electrical & Electronics Engineering,
Information Technology Engineering,
Electronics & Communication Engineering.
Management of Business Administration.

Level:- Under Graduate, Post Graduate

1st Year of approval by the Council :-

Year wise Sanctioned Intake :- 2007

Year wise Actual Admissions :-	2008-09	240
	:- 2009-10	360 (Including MBA)
	:- 2010- 11	420 (Including MBA)

Cut off - General quota

Students passed (BE / MBA):-

Nil, As BE is in 3rd year and MBA is in 2nd Year.

Students Placed: - Nil Being 3rd year of BE.

Average Pay package, Rs./ Year :- Not Applicable

Students opted for Higher Studies :- Not Applicable

Accreditation Status of the course :- Not Yet

Doctoral Courses :- Not Yet

Foreign Collaborations, of any :- Nil

Professional Society Memberships :- Member OF CII

Professional activities :- EDP cell in position

Consultancy activities :-
Consultancy Assistance Provided to the Industry

Grants fetched :- Nil

Departmental Achievements :- Nil

Distinguished Alumni :- Not Yet

10.13 Name of Teaching Staff

Surname	First Name	Middle Name	Exact Designation	Course
MANDLOI	UMESH		PROFESSOR	MASTERS IN BUSINESS ADMINISTRATION (MARKETING AND FINANCE)
WADAWA	DINESH		PROFESSOR	MARKETING & FINANCE
SHARMA	PRIYANKA		ASST PROFESSOR	MASTERS IN BUSINESS ADMINISTRATION (INFORMATION MANAGEMENT)
RAI	RASHMI		ASSOCIATE PROFESSOR	MASTERS IN INDUSTRIAL RELATIONS AND PERSONNEL MANAGEMENT
CHOURISHYA	SWETA		ASSOCIATE PROFESSOR	MASTERS IN BUSINESS MANAGEMENT
MISHRA	MADHUWALA		ASSOCIATE PROFESSOR	MASTERS IN BUSINESS MANAGEMENT
KOUL	RACHNA		ASSOCIATE PROFESSOR	MASTERS IN BUSINESS MANAGEMENT

GIDWANI	DAS	GOVERDHAN	DIRECTOR	MASTERS IN BUSINESS ADMINISTRATION (HUMAN RESOURCE DEVELOPMENT)
WAGH	D K		PROFESSOR	ELECTRICAL AND ELECTRONICS ENGINEERING
SINGHAL	TRAPTI		ASST PROFESSOR	MASTERS IN BUSINESS MANAGEMENT
PRASHAR	SHOURABH		ASST PROFESSOR	MASTERS IN BUSINESS MANAGEMENT
WASKALE	ROSHNI		ASST PROFESSOR	CIVIL ENGINEERING
DETHLIYA	ARJUN		ASSOCIATE PROFESSOR	CIVIL ENGINEERING
BIRLA	YOGESH		ASSOCIATE PROFESSOR	CIVIL ENGINEERING
VERMA	DEPTI		PROFESSOR	CIVIL ENGINEERING
TARE	SHRIKANT		PROFESSOR	MECHANICAL ENGINEERING
TATHOD	PRAVEEN		ASST PROFESSOR	MECHANICAL ENGINEERING
SHIKH	AMIR		ASST PROFESSOR	MECHANICAL ENGINEERING
PANDAY	ABHISHEK		ASST PROFESSOR	MECHANICAL ENGINEERING
NISHAD	LAKSHMI		ASSOCIATE PROFESSOR	INFORMATION TECHNOLOGY
BARODE	HIMANSHU		ASST PROFESSOR	MECHANICAL ENGINEERING
JAIN	NEHA		ASSOCIATE PROFESSOR	COMPUTER SCEINCE & ENGINEERING
SOLANKI	NIHARIKA		ASST PROFESSOR	INFORMATION TECHNOLOGY
DHUSIYA	MANOJ		ASST PROFESSOR	INFORMATION TECHNOLOGY

GOYAL	TUSHAR		ASSOCIATE PROFESSOR	INFORMATION TECHNOLOGY
KURANA	SWAPNIL		ASSOCIATE PROFESSOR	INFORMATION TECHNOLOGY
RAGHUBANSHI	SATISH		ASST PROFESSOR	INFORMATION TECHNOLOGY
JAIN	RAKESH		ASST PROFESSOR	COMPUTER SCEINCE & ENGINEERING
BATAWAL	SHIKHA		ASST PROFESSOR	COMPUTER SCEINCE & ENGINEERING
SINGH	AJAY		ASST PROFESSOR	INFORMATION TECHNOLOGY
BAIS	AJAY	singh	ASST PROFESSOR	COMPUTER SCEINCE & ENGINEERING
SINGH	PANKAJ	KUMAR	ASST PROFESSOR	COMPUTER SCIENCE & ENGINEERING
AJANKAR	VIVIT	KUMAR	ASST PROFESSOR	INFORMATION TECHNOLOGY
CHOUDHARY	NEHA		ASST PROFESSOR	COMPUTER SCEINCE & ENGINEERING
MADHURI	SAGAR		ASST PROFESSOR	MASTERS IN BUSINESS MANAGEMENT
HANUMANT	JITENDRA		HEAD OF DEPT	ELECTRICAL AND ELECTRONICS ENGINEERING
SOLANKI	ARVIND		ASSOCIATE PROFESSOR	ELECTRICAL AND ELECTRONICS ENGINEERING
KHURPIA	NIDHI		ASST PROFESSOR	ELECTRICAL AND ELECTRONICS ENGINEERING
SODANI	ARPITA		ASST PROFESSOR	ELECTRICAL AND ELECTRONICS ENGINEERING
TRIVEDI	PURVA		ASSOCIATE PROFESSOR	ELECTRICAL AND ELECTRONICS ENGINEERING
DWIVEDI	ANANT		ASSOCIATE PROFESSOR	ELECTRICAL AND ELECTRONICS ENGINEERING

RAJPUT	VIKASH		ASSOCIATE PROFESSOR	ELECTRICAL AND ELECTRONICS ENGINEERING
JAISHWAL	NITIN		ASSOCIATE PROFESSOR	ELECTRONICS & COMMUNICATION ENGG
PARTHE	NAVNEET		ASST PROFESSOR	ELECTRONICS & COMMUNICATION ENGG
RATHORE	RAHIBHADUR		ASST PROFESSOR	ELECTRONICS & COMMUNICATION ENGG
GAUTAM	SHEETAL		ASSOCIATE PROFESSOR	ELECTRONICS & COMMUNICATION ENGG
GUPTA	MONICA		ASST PROFESSOR	ELECTRONICS & COMMUNICATION ENGG
MALGAYA	SHRIKANT		ASSOCIATE PROFESSOR	ELECTRONICS & COMMUNICATION ENGG
NOORANI	NASREEN		ASST PROFESSOR	ELECTRONICS & COMMUNICATION ENGG
RAJVAIDYA	MOHIT		ASST PROFESSOR	ELECTRONICS & COMMUNICATION ENGG
ASATI	MADHURI		PROFESSOR	COMPUTER SCIENCE & ENGINEERING
ASHAPURE	SHRADDHA		PROFESSOR	INFORMATION TECHNOLOGY
BANGAR	NEETA		PROFESSOR	APPLIED ELECTRICAL & INSTRUMENTATION ENGINEERING
GOYAL	PRAVEEN		PROFESSOR	COMPUTER SCIENCE & ENGINEERING
TIWARI	SANJAY		ASST PROFESSOR	INFORMATION TECHNOLOGY
DUBEY	SAWAN		ASSOCIATE PROFESSOR	ELECTRICAL AND ELECTRONICS ENGINEERING
ASATI	ALOK		ASST PROFESSOR	COMPUTER SCIENCE & ENGINEERING
DATTA	SWATI		ASST PROFESSOR	COMPUTER SCIENCE & ENGINEERING
DAVE	NAVEEN		ASST PROFESSOR	MECHANICAL ENGINEERING

TIWARI	PRIYANKA		ASST PROFESSOR	COMPUTER SCIENCE & ENGINEERING
DESHMUKH	YOGESH		ASST PROFESSOR	INFORMATION TECHNOLOGY AND ENGINEERING
GOYAL	PRAVEEN		HEAD OF DEPT	COMPUTER SCIENCE & ENGINEERING
MANSORE	ASHA		ASST PROFESSOR	ELECTRONICS & COMMUNICATION ENGG
VERMA	DEEPIKA		ASST PROFESSOR	INFORMATION TECHNOLOGY AND ENGINEERING
KANDHARI	HEENA		ASSOCIATE PROFESSOR	BUSINESS ADMINISTRATION
SINGH	R P		PROFESSOR	MASTERS IN BUSINESS MANAGEMENT
PATEL	ASHISH		ASST PROFESSOR	INFORMATION TECHNOLOGY AND ENGINEERING
RITESH	AKANKSHA		ASST PROFESSOR	MASTERS IN BUSINESS ADMINISTRATION
KAMALPURIYA	NEHA		ASST PROFESSOR	COMPUTER SCIENCE & TECHNOLOGY

10.15 Infrastructural Information

Classroom/ Laboratory/ Tutorial Room Facilities

Programme	Course	Department	Level	Room Type
ENGINEERING AND TECHNOLOGY	CIVIL ENGINEERING	CIVIL ENGINEERING	UNDER GRADUATE	Classroom
ENGINEERING AND TECHNOLOGY	CIVIL ENGINEERING	CIVIL ENGINEERING	UNDER GRADUATE	Classroom
ENGINEERING AND TECHNOLOGY	CIVIL ENGINEERING	CIVIL ENGINEERING	UNDER GRADUATE	Classroom
ENGINEERING AND TECHNOLOGY	CIVIL ENGINEERING	CIVIL ENGINEERING	UNDER GRADUATE	Classroom
ENGINEERING AND TECHNOLOGY	CIVIL ENGINEERING	CIVIL ENGINEERING	UNDER GRADUATE	Tutorial Room
ENGINEERING AND TECHNOLOGY	ELECTRICAL AND ELECTRONICS ENGINEERING	ELECTRICAL AND ELECTRONICS ENGINEERING	UNDER GRADUATE	Classroom
ENGINEERING AND TECHNOLOGY	ELECTRICAL AND ELECTRONICS ENGINEERING	ELECTRICAL AND ELECTRONICS ENGINEERING	UNDER GRADUATE	Classroom

ENGINEERING AND TECHNOLOGY	ELECTRICAL AND ELECTRONICS ENGINEERING	ELECTRICAL AND ELECTRONICS ENGINEERING	UNDER GRADUATE	Classroom
ENGINEERING AND TECHNOLOGY	ELECTRICAL AND ELECTRONICS ENGINEERING	ELECTRICAL AND ELECTRONICS ENGINEERING	UNDER GRADUATE	Classroom
ENGINEERING AND TECHNOLOGY	ELECTRICAL AND ELECTRONICS ENGINEERING	ELECTRICAL AND ELECTRONICS ENGINEERING	UNDER GRADUATE	Tutorial Room
ENGINEERING AND TECHNOLOGY	MECHANICAL ENGINEERING	MECHANICAL ENGINEERING	UNDER GRADUATE	Classroom
ENGINEERING AND TECHNOLOGY	MECHANICAL ENGINEERING	MECHANICAL ENGINEERING	UNDER GRADUATE	Classroom
ENGINEERING AND TECHNOLOGY	MECHANICAL ENGINEERING	MECHANICAL ENGINEERING	UNDER GRADUATE	Classroom
ENGINEERING AND TECHNOLOGY	MECHANICAL ENGINEERING	MECHANICAL ENGINEERING	UNDER GRADUATE	Classroom
ENGINEERING AND TECHNOLOGY	MECHANICAL ENGINEERING	MECHANICAL ENGINEERING	UNDER GRADUATE	Tutorial Room
ENGINEERING AND TECHNOLOGY	INFORMATION TECHNOLOGY AND ENGINEERING	INFORMATION TECHNOLOGY	UNDER GRADUATE	Classroom
ENGINEERING AND TECHNOLOGY	INFORMATION TECHNOLOGY AND ENGINEERING	INFORMATION TECHNOLOGY	UNDER GRADUATE	Classroom
ENGINEERING AND TECHNOLOGY	INFORMATION TECHNOLOGY AND ENGINEERING	INFORMATION TECHNOLOGY	UNDER GRADUATE	Classroom
ENGINEERING AND TECHNOLOGY	INFORMATION TECHNOLOGY AND ENGINEERING	INFORMATION TECHNOLOGY	UNDER GRADUATE	Classroom
ENGINEERING AND TECHNOLOGY	INFORMATION TECHNOLOGY AND ENGINEERING	INFORMATION TECHNOLOGY	UNDER GRADUATE	Tutorial Room
ENGINEERING AND TECHNOLOGY	COMPUTER SCIENCE & ENGINEERING	COMPUTER SCIENCE AND ENGINEERING	UNDER GRADUATE	Classroom
ENGINEERING AND TECHNOLOGY	COMPUTER SCIENCE & ENGINEERING	COMPUTER SCIENCE AND ENGINEERING	UNDER GRADUATE	Classroom
ENGINEERING AND TECHNOLOGY	COMPUTER SCIENCE & ENGINEERING	COMPUTER SCIENCE AND ENGINEERING	UNDER GRADUATE	Classroom
ENGINEERING AND TECHNOLOGY	COMPUTER SCIENCE & ENGINEERING	COMPUTER SCIENCE AND ENGINEERING	UNDER GRADUATE	Classroom
ENGINEERING AND TECHNOLOGY	COMPUTER SCIENCE & ENGINEERING	COMPUTER SCIENCE AND ENGINEERING	UNDER GRADUATE	Tutorial Room
ENGINEERING AND TECHNOLOGY	ELECTRONICS & COMMUNICATION ENGG	ELECTRONICS AND COMMUNICATIONS ENGINEERING	UNDER GRADUATE	Classroom
ENGINEERING AND TECHNOLOGY	ELECTRONICS & COMMUNICATION ENGG	ELECTRONICS AND COMMUNICATIONS ENGINEERING	UNDER GRADUATE	Classroom
ENGINEERING AND TECHNOLOGY	ELECTRONICS & COMMUNICATION ENGG	ELECTRONICS AND COMMUNICATIONS ENGINEERING	UNDER GRADUATE	Classroom
ENGINEERING AND TECHNOLOGY	ELECTRONICS & COMMUNICATION ENGG	ELECTRONICS AND COMMUNICATIONS ENGINEERING	UNDER GRADUATE	Classroom
ENGINEERING AND TECHNOLOGY	ELECTRONICS & COMMUNICATION ENGG	ELECTRONICS AND COMMUNICATIONS ENGINEERING	UNDER GRADUATE	Tutorial Room
MANAGEMENT	MASTERS IN BUSINESS ADMINISTRATION	MANAGEMENT	POST GRADUATE	Classroom
MANAGEMENT	MASTERS IN BUSINESS ADMINISTRATION	MANAGEMENT	POST GRADUATE	Classroom

MANAGEMENT	MASTERS IN BUSINESS ADMINISTRATION	MANAGEMENT	POST GRADUATE	Classroom
MANAGEMENT	MASTERS IN BUSINESS ADMINISTRATION	MANAGEMENT	POST GRADUATE	Tutorial Room
MANAGEMENT	MASTERS IN BUSINESS ADMINISTRATION	MANAGEMENT	POST GRADUATE	Tutorial Room
ENGINEERING AND TECHNOLOGY	CIVIL ENGINEERING	CIVIL ENGINEERING	UNDER GRADUATE	Laboratory
ENGINEERING AND TECHNOLOGY	CIVIL ENGINEERING	CIVIL ENGINEERING	UNDER GRADUATE	Laboratory
ENGINEERING AND TECHNOLOGY	CIVIL ENGINEERING	CIVIL ENGINEERING	UNDER GRADUATE	Laboratory
ENGINEERING AND TECHNOLOGY	CIVIL ENGINEERING	CIVIL ENGINEERING	UNDER GRADUATE	Laboratory
ENGINEERING AND TECHNOLOGY	CIVIL ENGINEERING	CIVIL ENGINEERING	UNDER GRADUATE	Laboratory
ENGINEERING AND TECHNOLOGY	CIVIL ENGINEERING	CIVIL ENGINEERING	UNDER GRADUATE	Laboratory
ENGINEERING AND TECHNOLOGY	CIVIL ENGINEERING	CIVIL ENGINEERING	UNDER GRADUATE	Laboratory
ENGINEERING AND TECHNOLOGY	CIVIL ENGINEERING	CIVIL ENGINEERING	UNDER GRADUATE	Laboratory
ENGINEERING AND TECHNOLOGY	CIVIL ENGINEERING	CIVIL ENGINEERING	UNDER GRADUATE	Laboratory
ENGINEERING AND TECHNOLOGY	CIVIL ENGINEERING	CIVIL ENGINEERING	UNDER GRADUATE	Laboratory
ENGINEERING AND TECHNOLOGY	CIVIL ENGINEERING	CIVIL ENGINEERING	UNDER GRADUATE	Laboratory
ENGINEERING AND TECHNOLOGY	INFORMATION TECHNOLOGY AND ENGINEERING	INFORMATION TECHNOLOGY	UNDER GRADUATE	Laboratory
ENGINEERING AND TECHNOLOGY	COMPUTER SCIENCE & ENGINEERING	COMPUTER SCIENCE AND ENGINEERING	UNDER GRADUATE	Laboratory
ENGINEERING AND TECHNOLOGY	MECHANICAL ENGINEERING	MECHANICAL ENGINEERING	UNDER GRADUATE	Workshop
MANAGEMENT	MASTERS IN BUSINESS ADMINISTRATION	MANAGEMENT	POST GRADUATE	Seminar Hall
ENGINEERING AND TECHNOLOGY	CIVIL ENGINEERING	CIVIL ENGINEERING	UNDER GRADUATE	Seminar Hall
ENGINEERING AND TECHNOLOGY	MECHANICAL ENGINEERING	MECHANICAL ENGINEERING	UNDER GRADUATE	Seminar Hall
ENGINEERING AND TECHNOLOGY	ELECTRICAL AND ELECTRONICS ENGINEERING	ELECTRICAL AND ELECTRONICS ENGINEERING	UNDER GRADUATE	Seminar Hall
ENGINEERING AND TECHNOLOGY	ELECTRONICS & COMMUNICATION ENGG	ELECTRONICS AND COMMUNICATIONS ENGINEERING	UNDER GRADUATE	Seminar Hall
ENGINEERING AND TECHNOLOGY	COMPUTER SCIENCE & ENGINEERING	COMPUTER SCIENCE AND ENGINEERING	UNDER GRADUATE	Seminar Hall
ENGINEERING AND TECHNOLOGY	INFORMATION TECHNOLOGY AND ENGINEERING	INFORMATION TECHNOLOGY	UNDER GRADUATE	Seminar Hall
ENGINEERING AND TECHNOLOGY	MECHANICAL ENGINEERING	MECHANICAL ENGINEERING	UNDER GRADUATE	Drawing Hall
ENGINEERING AND TECHNOLOGY	COMPUTER SCIENCE & ENGINEERING	COMPUTER SCIENCE AND ENGINEERING	UNDER GRADUATE	Laboratory
ENGINEERING AND TECHNOLOGY	COMPUTER SCIENCE & ENGINEERING	COMPUTER SCIENCE AND ENGINEERING	UNDER GRADUATE	Laboratory
ENGINEERING AND TECHNOLOGY	COMPUTER SCIENCE & ENGINEERING	COMPUTER SCIENCE AND ENGINEERING	UNDER GRADUATE	Laboratory

ENGINEERING AND TECHNOLOGY	ELECTRICAL AND ELECTRONICS ENGINEERING	ELECTRICAL AND ELECTRONICS ENGINEERING	UNDER GRADUATE	Laboratory
ENGINEERING AND TECHNOLOGY	ELECTRICAL AND ELECTRONICS ENGINEERING	ELECTRICAL AND ELECTRONICS ENGINEERING	UNDER GRADUATE	Laboratory
ENGINEERING AND TECHNOLOGY	ELECTRICAL AND ELECTRONICS ENGINEERING	ELECTRICAL AND ELECTRONICS ENGINEERING	UNDER GRADUATE	Laboratory
ENGINEERING AND TECHNOLOGY	ELECTRICAL AND ELECTRONICS ENGINEERING	ELECTRICAL AND ELECTRONICS ENGINEERING	UNDER GRADUATE	Laboratory
ENGINEERING AND TECHNOLOGY	ELECTRICAL AND ELECTRONICS ENGINEERING	ELECTRICAL AND ELECTRONICS ENGINEERING	UNDER GRADUATE	Laboratory
ENGINEERING AND TECHNOLOGY	ELECTRICAL AND ELECTRONICS ENGINEERING	ELECTRICAL AND ELECTRONICS ENGINEERING	UNDER GRADUATE	Laboratory
ENGINEERING AND TECHNOLOGY	ELECTRONICS & COMMUNICATION ENGG	ELECTRONICS AND COMMUNICATIONS ENGINEERING	UNDER GRADUATE	Laboratory
ENGINEERING AND TECHNOLOGY	ELECTRONICS & COMMUNICATION ENGG	ELECTRONICS AND COMMUNICATIONS ENGINEERING	UNDER GRADUATE	Laboratory
ENGINEERING AND TECHNOLOGY	ELECTRONICS & COMMUNICATION ENGG	ELECTRONICS AND COMMUNICATIONS ENGINEERING	UNDER GRADUATE	Laboratory
ENGINEERING AND TECHNOLOGY	ELECTRONICS & COMMUNICATION ENGG	ELECTRONICS AND COMMUNICATIONS ENGINEERING	UNDER GRADUATE	Laboratory
ENGINEERING AND TECHNOLOGY	ELECTRONICS & COMMUNICATION ENGG	ELECTRONICS AND COMMUNICATIONS ENGINEERING	UNDER GRADUATE	Laboratory
ENGINEERING AND TECHNOLOGY	ELECTRONICS & COMMUNICATION ENGG	ELECTRONICS AND COMMUNICATIONS ENGINEERING	UNDER GRADUATE	Laboratory
ENGINEERING AND TECHNOLOGY	ELECTRONICS & COMMUNICATION ENGG	ELECTRONICS AND COMMUNICATIONS ENGINEERING	UNDER GRADUATE	Laboratory
ENGINEERING AND TECHNOLOGY	ELECTRONICS & COMMUNICATION ENGG	ELECTRONICS AND COMMUNICATIONS ENGINEERING	UNDER GRADUATE	Laboratory
ENGINEERING AND TECHNOLOGY	ELECTRONICS & COMMUNICATION ENGG	ELECTRONICS AND COMMUNICATIONS ENGINEERING	UNDER GRADUATE	Laboratory
ENGINEERING AND TECHNOLOGY	ELECTRONICS & COMMUNICATION ENGG	ELECTRONICS AND COMMUNICATIONS ENGINEERING	UNDER GRADUATE	Laboratory
ENGINEERING AND TECHNOLOGY	ELECTRICAL AND ELECTRONICS ENGINEERING	ELECTRICAL AND ELECTRONICS ENGINEERING	UNDER GRADUATE	Laboratory
ENGINEERING AND TECHNOLOGY	MECHANICAL ENGINEERING	MECHANICAL ENGINEERING	UNDER GRADUATE	Laboratory
ENGINEERING AND TECHNOLOGY	ELECTRONICS & COMMUNICATION ENGG	ELECTRONICS AND COMMUNICATIONS ENGINEERING	UNDER GRADUATE	Laboratory

Computer Centre Facilities

Room Type	Room Id/Name	Area of room in Sqm	Readiness of flooring	Readiness of Wall & Painting	Readiness of Electrification & Lighting	Readiness of Furniture
Computer Center	1	150	Ready	Ready	Ready	Ready

Library Facilities

Room Type	Room Id/Name	Area of room in Sqm	Readiness of flooring	Readiness of Wall & Painting	Readiness of Electrification & Lighting	Readiness of furniture
Library&Reading Room	2	561.7	Ready	Ready	Ready	Ready

Working Hours from to	Name of E Journal Subscription available	Current Annual Budget Rs.	Total Library area in sq m	Library Networking	Reprographic Facility	No. of Multimedia
8.30 AM TO 400 PM	WORK IN PROGRESS	525,000	561.7	IN PROGRESS	Yes	

Cafeteria

Room Id/Name	Room Type	Area of room in sqm	Readiness of flooring	Readiness of Wall & Painting	Readiness of Electrification & Lighting	Readiness of furniture
1	Cafeteria	150	Ready	Ready	Ready	Ready

Any other facilities

Room Id/Name	Room Type	Area of room in sqm	Readiness of flooring	Readiness of Wall & Painting	Readiness of Electrification & Lighting	Readiness of furniture
2	Student activity / GCR	200	Ready	Ready	Ready	Ready
3	Stationery Store	10	Ready	Ready	Ready	Ready
4	Others	50	Ready	Ready	Ready	Ready
5	Toilet	350	Ready	Ready	Ready	Ready
6	Boys Common Room	100	Ready	Ready	Ready	Ready
7	Girls Common Room	100	Ready	Ready	Ready	Ready
8	First aid cum Sick Room	10	Ready	Ready	Ready	Ready

10.16 Boys Hostel:- Nil

Girls Hostel:- Nil

Medical & Other facilities at Hostel:- Nil

10.17 Academic Sessions

Semester

Examination system, Year/ Sem

Sem

Period of declaration of results

March And September

10.2 Name of the Information Officer for RTI

Mrs. Sunita Thumbre

Designation

Aministrative Officer

Phone number with STD code

9977286492

FAX number with STD code

Email

Sunitasksits@gmail.com